

\$675,000 - Parcel 6 Range Road 271 Just South Of Highway 9., Rural Rocky View County

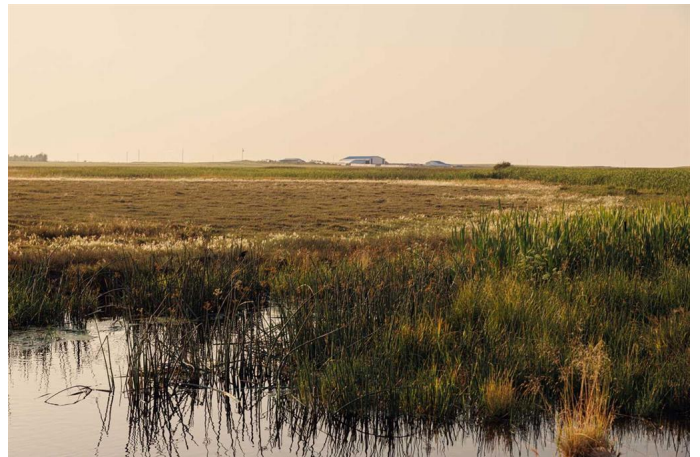
MLS® #A2158849

\$675,000

0 Bedroom, 0.00 Bathroom,
Land on 54.48 Acres

NONE, Rural Rocky View County, Alberta

McKay Lands features a variety of acreages near Kathryn, Alberta, ranging from 4.5 acres to an impressive 95 acres. Thoughtfully subdivided based on deep knowledge and love for the land, each parcel tells its own story and offers a wealth of untapped possibilities. Country living with added perks. Country residential acreage. Paved road access. Mountain views. Located minutes from the Town of Kathryn, McKay Lands delivers all the perks of country living with convenient access to big city amenities. Conveniently Close Yet Blissfully Far. 2 minutes to Keoma community hall. 2 minutes to Keoma baseball field. 5 minutes to Kathryn K-8 school. 10 minutes to Irricana. 20 minutes to Cross Iron Mills Mall. 25 minutes to Airdrie. 30 minutes to the Calgary Airport. 45 minutes to downtown Calgary.



Essential Information

MLS® #	A2158849
Price	\$675,000
Bathrooms	0.00
Acres	54.48
Type	Land
Sub-Type	Residential Land
Status	Active

Community Information

Address Parcel 6 Range Road 271 Just South Of Highway 9.
Subdivision NONE
City Rural Rocky View County
County Rocky View County
Province Alberta
Postal Code T0M 1G0

Additional Information

Date Listed August 16th, 2024
Days on Market 227
Zoning A-SML

Listing Details

Listing Office Honestdoor Inc.

Data is supplied by Pillar 9â„¢ MLSÂ® System. Pillar 9â„¢ is the owner of the copyright in its MLSÂ® System. Data is deemed reliable but is not guaranteed accurate by Pillar 9â„¢. The trademarks MLSÂ®, Multiple Listing ServiceÂ® and the associated logos are owned by The Canadian Real Estate Association (CREA) and identify the quality of services provided by real estate professionals who are members of CREA. Used under license.