

\$515,000 - Parcel 8 Range Road 271 Just South Of Highway 9., Rural Rocky View County

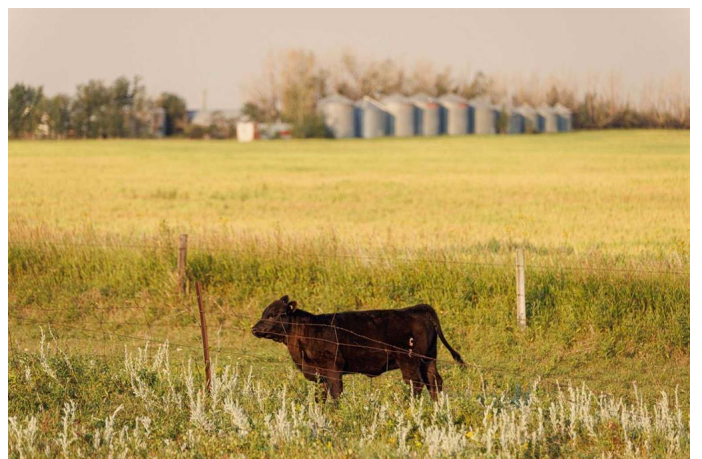
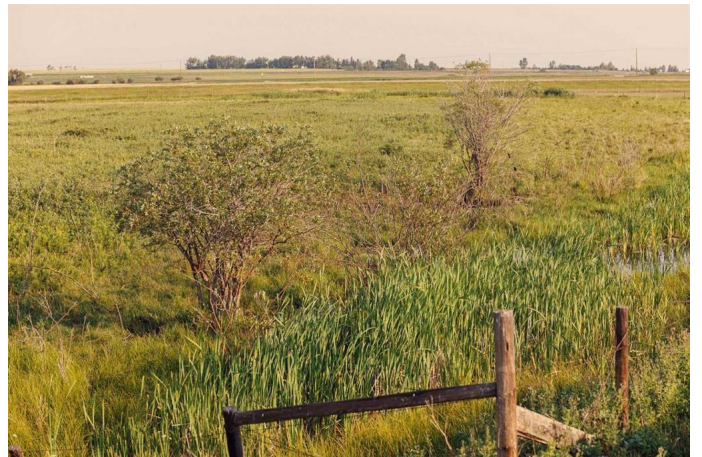
MLS® #A2158857

\$515,000

0 Bedroom, 0.00 Bathroom,
Land on 34.49 Acres

NONE, Rural Rocky View County, Alberta

McKay Lands features a variety of acreages near Kathryn, Alberta, ranging from 4.5 acres to an impressive 95 acres. Thoughtfully subdivided based on deep knowledge and love for the land, each parcel tells its own story and offers a wealth of untapped possibilities. Country living with added perks. Country residential acreage. Paved road access. Mountain views. Located minutes from the Town of Kathryn, McKay Lands delivers all the perks of country living with convenient access to big city amenities. Conveniently Close Yet Blissfully Far. 2 minutes to Keoma community hall. 2 minutes to Keoma baseball field. 5 minutes to Kathryn K-8 school. 10 minutes to Irricana. 20 minutes to Cross Iron Mills Mall. 25 minutes to Airdrie. 30 minutes to the Calgary Airport. 45 minutes to downtown Calgary.



Essential Information

| | |
|-----------|------------------|
| MLS® # | A2158857 |
| Price | \$515,000 |
| Bathrooms | 0.00 |
| Acres | 34.49 |
| Type | Land |
| Sub-Type | Residential Land |
| Status | Active |

Community Information

| | |
|-------------|--|
| Address | Parcel 8 Range Road 271 Just South Of Highway 9. |
| Subdivision | NONE |
| City | Rural Rocky View County |
| County | Rocky View County |
| Province | Alberta |
| Postal Code | T0M 1G0 |

Additional Information

| | |
|----------------|-------------------|
| Date Listed | August 16th, 2024 |
| Days on Market | 226 |
| Zoning | A-SML |

Listing Details

| | |
|----------------|-----------------|
| Listing Office | Honestdoor Inc. |
|----------------|-----------------|

Data is supplied by Pillar 9â„¢ MLSÂ® System. Pillar 9â„¢ is the owner of the copyright in its MLSÂ® System. Data is deemed reliable but is not guaranteed accurate by Pillar 9â„¢. The trademarks MLSÂ®, Multiple Listing ServiceÂ® and the associated logos are owned by The Canadian Real Estate Association (CREA) and identify the quality of services provided by real estate professionals who are members of CREA. Used under license.