

# \$575,000 - 1029 West Lakeview Drive, Chestermere

MLS® #A2199229

**\$575,000**

3 Bedroom, 3.00 Bathroom, 1,631 sqft  
Residential on 0.07 Acres

Chelsea\_CH, Chestermere, Alberta

Incredible Investment Opportunity in Chelsea,  
Chestermere!

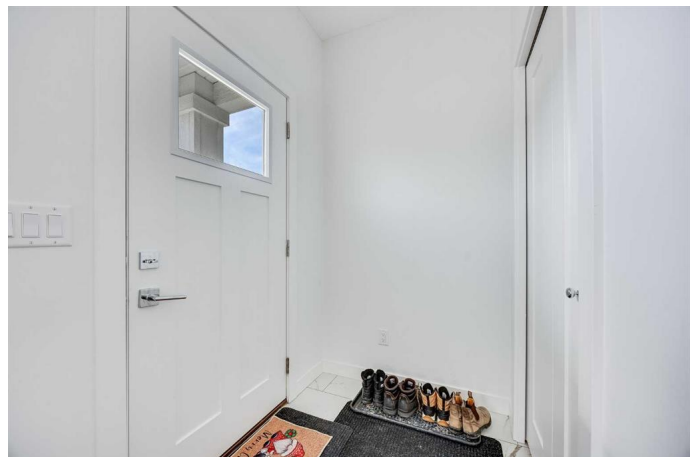
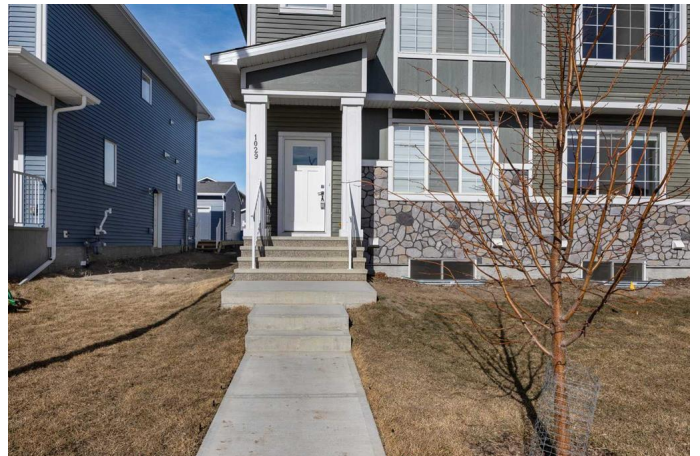
Welcome to this exceptional investment opportunityâ€”purchase one unit or buy both (next door is available for purchase) for maximum potential! Live in one side and rent out the other, or add basement suites to create up to four income-generating doors.

This brand-new 2024-built duplex features 3 bedrooms + bonus room, 2.5 bathrooms, and is located in the new and growing community of Chelsea in Chestermere.

Step inside to a modern kitchen, perfect for cooking and entertaining, complete with a oversized island, sleek quartz countertops, and stylish cabinetry. Upstairs, the spacious primary bedroom boasts a private ensuite, while two additional bedrooms, a full bath, and a bonus room with upstairs laundry provide comfort and convenience for the family.

The unfinished basement with a separate side entrance offers incredible potential for future developmentâ€”whether for additional living space or a rental suite (subject to approval and permitting by the city). Plus, the poured parking pad is already in place for a future garage, making this home a fantastic investment.

Prime location: Just minutes from



Chestermere Lake, 3 minutes to Costco, Homesense, Starbucks and more , and 20 minutes to downtown Calgary, this family-friendly neighbourhood offers breathtaking mountain views when you look to the right of your front door.

Don't miss this incredible opportunityâ€”whether you're an investor or a future homeowner, this property is a smart buy!

Contact us today for more details or to schedule a viewing!

Built in 2024

### Essential Information

MLS® #	A2199229
Price	\$575,000
Bedrooms	3
Bathrooms	3.00
Full Baths	2
Half Baths	1
Square Footage	1,631
Acres	0.07
Year Built	2024
Type	Residential
Sub-Type	Semi Detached
Style	2 Storey, Side by Side
Status	Active

### Community Information

Address	1029 West Lakeview Drive
Subdivision	Chelsea_CH
City	Chestermere
County	Chestermere
Province	Alberta
Postal Code	T1X 2T2

### Amenities

Parking Spaces 2  
Parking Parking Pad

### **Interior**

Interior Features Quartz Counters  
Appliances Dishwasher, Electric Stove, Microwave Hood Fan, Refrigerator,  
Washer/Dryer  
Heating Forced Air  
Cooling None  
Has Basement Yes  
Basement Full, Unfinished

### **Exterior**

Exterior Features Private Yard  
Lot Description Back Lane  
Roof Asphalt Shingle  
Construction Stone, Vinyl Siding  
Foundation Poured Concrete

### **Additional Information**

Date Listed March 5th, 2025  
Days on Market 29  
Zoning R-3

### **Listing Details**

Listing Office The Real Estate District

Data is supplied by Pillar 9â„¢ MLSÂ® System. Pillar 9â„¢ is the owner of the copyright in its MLSÂ® System. Data is deemed reliable but is not guaranteed accurate by Pillar 9â„¢. The trademarks MLSÂ®, Multiple Listing ServiceÂ® and the associated logos are owned by The Canadian Real Estate Association (CREA) and identify the quality of services provided by real estate professionals who are members of CREA. Used under license.