

\$995,000 - 2343 Palisade Drive Sw, Calgary

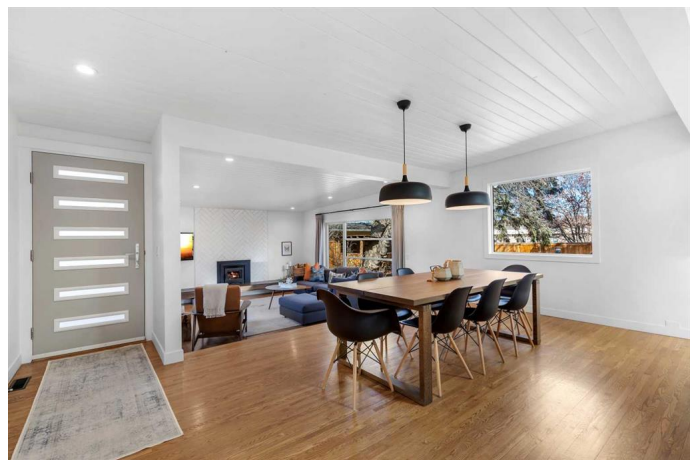
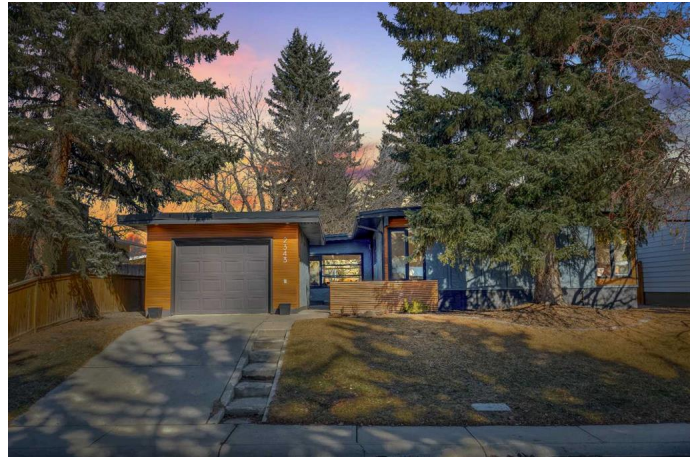
MLS® #A2200417

\$995,000

5 Bedroom, 3.00 Bathroom, 1,341 sqft
Residential on 0.14 Acres

Palliser, Calgary, Alberta

Discover the charm of Palliser with this beautifully reimagined mid-century modern bungalow. This 1,341 sq ft home features 5 bedrooms and 3 full bathrooms, making it perfect for families. Situated in a prime location, this home is filled with natural light from SW front exposure / NE rear, and surrounded by lovely mature trees, offering a serene atmosphere. Conveniently, this lot backs onto a school and is in a great school district, making it ideal for families. Just a stone's throw from South Glenmore Park, the reservoir, and surrounding amenities such as the leisure center, it also provides easy access to the Ring Road, creating a short drive to the mountains. This location seamlessly blends urban convenience with nature's tranquility. Inside, enjoy a spacious layout featuring new windows and refinished oak floors, a skylight, and a sloped tongue-and-groove painted ceiling. The windows and exterior were completely updated during the renovation in 2021, and the home has been exceptionally maintained. The main floor includes a chef-designed kitchen with quartz countertops and walnut details, an open dining area, and a sunken living room with a high-efficiency wood-burning fireplace and large windows providing natural light from both the southwest and northeast. Three bedrooms are on this level, including a primary suite with an ensuite bathroom and built-in closet. The expansive basement offers a mudroom, a large laundry area, recreation space, two



additional bedrooms, a full bathroom complete with a beautiful shower, and a hidden workshop, art studio, or storage space perfect for whatever fits your family's needs. The exterior boasts cedar accents and modern gray stucco, leading to a welcoming courtyard and a detached garage.

The backyard is perfect for entertaining, featuring a large deck, patio, ample lawn space, and mature trees. This exceptional family home is a must-see—schedule your viewing today!

Built in 1968

Essential Information

MLS® #	A2200417
Price	\$995,000
Bedrooms	5
Bathrooms	3.00
Full Baths	3
Square Footage	1,341
Acres	0.14
Year Built	1968
Type	Residential
Sub-Type	Detached
Style	Bungalow
Status	Active

Community Information

Address	2343 Palisade Drive Sw
Subdivision	Palliser
City	Calgary
County	Calgary
Province	Alberta
Postal Code	T2V 3V2

Amenities

Parking Spaces	3
Parking	Driveway, Garage Faces Front, Oversized, Single Garage Detached, On

Street
of Garages 1

Interior

Interior Features Beamed Ceilings, Closet Organizers, French Door, High Ceilings, Kitchen Island, No Smoking Home, Open Floorplan, Quartz Counters, Recessed Lighting, See Remarks, Skylight(s)
Appliances Dishwasher, Gas Range, Microwave, Range Hood, Refrigerator, Washer/Dryer, Window Coverings
Heating Fireplace(s), Forced Air, Natural Gas
Cooling None
Fireplace Yes
of Fireplaces 1
Fireplaces Great Room, Wood Burning, See Remarks
Has Basement Yes
Basement Finished, Full

Exterior

Exterior Features Garden, Private Yard, Courtyard
Lot Description Back Lane, Back Yard, Backs on to Park/Green Space, Front Yard, Fruit Trees/Shrub(s), Lawn, Many Trees, Private, Rectangular Lot, Street Lighting
Roof Asphalt Shingle
Construction Cedar, Stucco, Wood Frame
Foundation Poured Concrete

Additional Information

Date Listed March 13th, 2025
Days on Market 1
Zoning R-CG

Listing Details

Listing Office Grey Rock Properties

Data is supplied by Pillar 9â,,ç MLSÂ® System. Pillar 9â,,ç is the owner of the copyright in its MLSÂ® System. Data is deemed reliable but is not guaranteed accurate by Pillar 9â,,ç. The trademarks MLSÂ®, Multiple Listing ServiceÂ® and the associated logos are owned by The Canadian Real Estate Association (CREA) and identify the quality of services provided by real estate professionals who are members of CREA. Used under license.