

\$79,900 - #g11a, 260300 Writing Creek Crescent, Rural Rocky View County

MLS® #A2203261

\$79,900

0 Bedroom, 0.00 Bathroom,
Commercial on 0.00 Acres

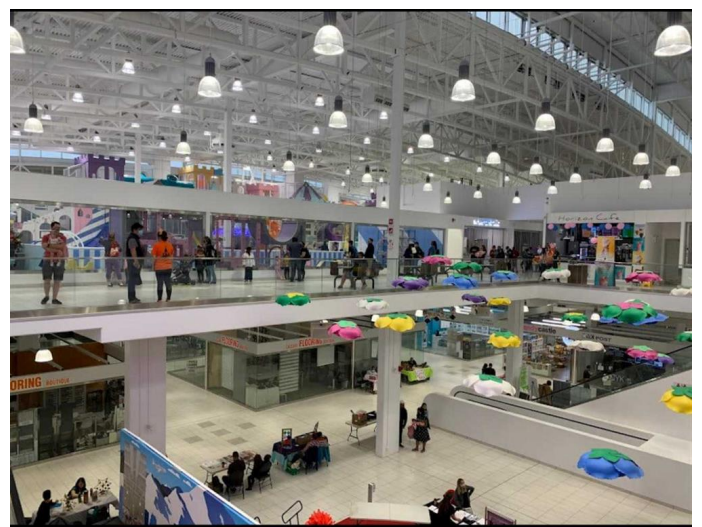
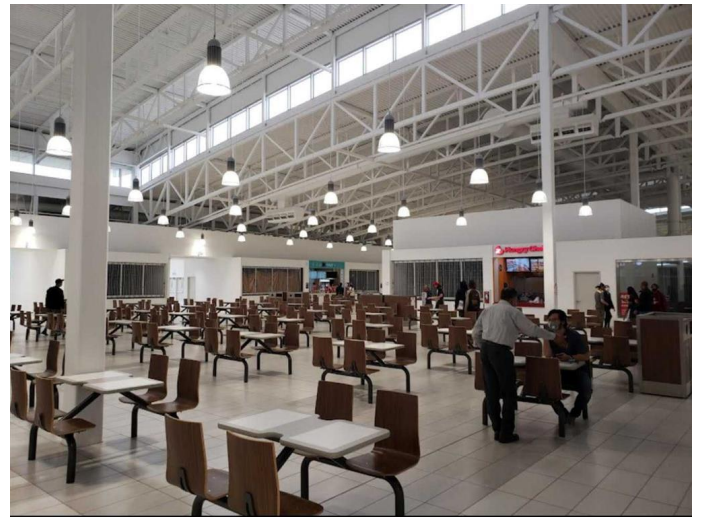
NONE, Rural Rocky View County, Alberta

BEST DEAL| EXCELLENT LOCATION| MOTIVATED SELLER| Unit G11A offers approximately 144 square feet of prime commercial space in a highly sought-after corner location. Featuring a sleek glass wall and sliding door, this fully built-out unit comes with tiled flooring, fresh paint, and modern lighting—ready for your business to thrive. Situated near the renowned CrossIron Mills, Airdrie, and vibrant NE communities, this space benefits from high foot traffic at New Horizon Mall, a growing hub for shopping and entertainment. With the added bonus of heated underground free parking and a brand-new kids' jumping castle on the top floor, this family-friendly destination is the perfect place to launch your business at an unbeatable price. Don't miss this exceptional opportunity—visit today and envision your success!

Built in 2018

Essential Information

MLS® #	A2203261
Price	\$79,900
Bathrooms	0.00
Acres	0.00
Year Built	2018
Type	Commercial



Sub-Type	Retail
Status	Active

Community Information

Address	#g11a, 260300 Writing Creek Crescent
Subdivision	NONE
City	Rural Rocky View County
County	Rocky View County
Province	Alberta
Postal Code	T4A 0X8

Additional Information

Date Listed	March 17th, 2025
Days on Market	15
Zoning	COMMERICAL

Listing Details

Listing Office	Royal LePage Mission Real Estate
----------------	----------------------------------

Data is supplied by Pillar 9â„¢ MLSÂ® System. Pillar 9â„¢ is the owner of the copyright in its MLSÂ® System. Data is deemed reliable but is not guaranteed accurate by Pillar 9â„¢. The trademarks MLSÂ®, Multiple Listing ServiceÂ® and the associated logos are owned by The Canadian Real Estate Association (CREA) and identify the quality of services provided by real estate professionals who are members of CREA. Used under license.