

\$449,900 - 21, 228 Theodore Place Nw, Calgary

MLS® #A2204929

\$449,900

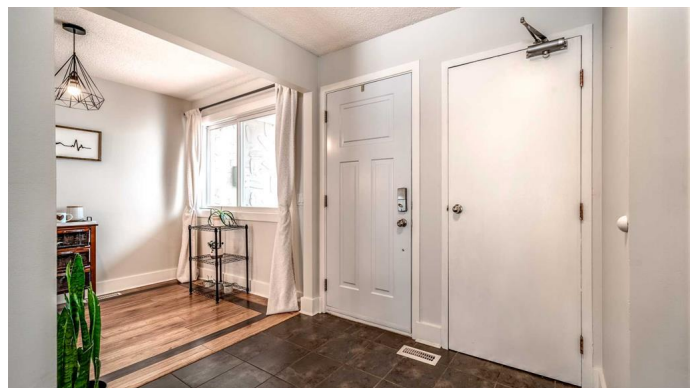
3 Bedroom, 3.00 Bathroom, 1,529 sqft
Residential on 0.00 Acres

Thornccliffe, Calgary, Alberta

Terrific value in this large, lovingly maintained, 3 bedroom, 2 storey unit with attached garage and backing onto greenspace in Tiffany Gardens! Superb main floor plan featuring a spacious living room with wood burning fireplace and open to dining room with vaulted ceiling. The kitchen offers an abundance of white cabinetry, loads of workable counterspace, stainless appliances and cozy breakfast nook. Three generous sized bedrooms can be found on the upper level including huge master retreat, complete with a full wall of closet space and 4 piece ensuite bath. The basement is completely finished offering a large family room, recreation room, additional flex space, laundry and storage. Recent updates include, fresh paint, new lighting & ceiling fans, new baseboards and trim on the upper level, upgraded attic insulation and more! Enjoy a large, private, fully fenced patio backing onto greenspace as well as a quaint, covered, front patio. A single attached garage and an additional parking space directly in front of the unit complete this great property. Conveniently located within walking distance to Nosehill Park and transit. Just a short commute to schools, shopping and downtown. A wonderful place to call home!

Built in 1976

Essential Information



| | |
|----------------|---------------|
| MLS® # | A2204929 |
| Price | \$449,900 |
| Bedrooms | 3 |
| Bathrooms | 3.00 |
| Full Baths | 2 |
| Half Baths | 1 |
| Square Footage | 1,529 |
| Acres | 0.00 |
| Year Built | 1976 |
| Type | Residential |
| Sub-Type | Row/Townhouse |
| Style | 2 Storey |
| Status | Active |

Community Information

| | |
|-------------|---------------------------|
| Address | 21, 228 Theodore Place Nw |
| Subdivision | Thornccliffe |
| City | Calgary |
| County | Calgary |
| Province | Alberta |
| Postal Code | T2K 5S1 |

Amenities

| | |
|----------------|------------------------|
| Amenities | Visitor Parking |
| Parking Spaces | 2 |
| Parking | Single Garage Attached |
| # of Garages | 1 |

Interior

| | |
|-------------------|---|
| Interior Features | Ceiling Fan(s), See Remarks, Vaulted Ceiling(s) |
| Appliances | Dishwasher, Dryer, Electric Stove, Garage Control(s), Microwave, Range Hood, Refrigerator, Washer, Window Coverings |
| Heating | Fireplace(s), Forced Air |
| Cooling | None |
| Fireplace | Yes |
| # of Fireplaces | 1 |
| Fireplaces | Wood Burning |
| Has Basement | Yes |
| Basement | Finished, Full |

Exterior

| | |
|-------------------|---|
| Exterior Features | Other |
| Lot Description | Backs on to Park/Green Space, See Remarks |
| Roof | Asphalt Shingle |
| Construction | Stucco, Cement Fiber Board |
| Foundation | Poured Concrete |

Additional Information

| | |
|----------------|------------------|
| Date Listed | March 27th, 2025 |
| Days on Market | 5 |
| Zoning | M-C1 |

Listing Details

| | |
|----------------|------------------------|
| Listing Office | Royal LePage Solutions |
|----------------|------------------------|

Data is supplied by Pillar 9â,,ç MLSÂ® System. Pillar 9â,,ç is the owner of the copyright in its MLSÂ® System. Data is deemed reliable but is not guaranteed accurate by Pillar 9â,,ç. The trademarks MLSÂ®, Multiple Listing ServiceÂ® and the associated logos are owned by The Canadian Real Estate Association (CREA) and identify the quality of services provided by real estate professionals who are members of CREA. Used under license.