

# \$525,000 - 1207 Jumping Pound Common, Cochrane

MLS® #A2205855

**\$525,000**

3 Bedroom, 3.00 Bathroom, 1,198 sqft  
Residential on 0.00 Acres

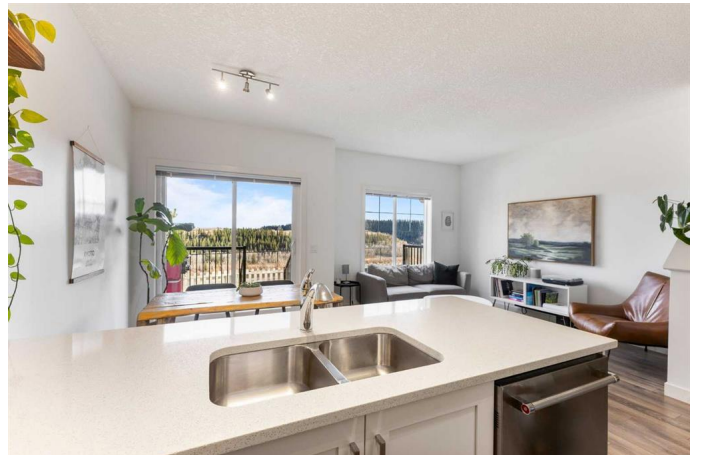
Jumping Pound Ridge, Cochrane, Alberta

Welcome to the best location of any town home in Cochrane—a spot that feels like it was made just for you. Perfectly perched to capture the rolling views of Jumping Pound, this stunning home backs directly onto nature, offering a peaceful, private setting that's truly one of a kind. From the moment you step through the front door, the view draws you in—expansive, open, and breathtaking.

Inside, this sleek and modern 3-bedroom home is beautifully upgraded with thoughtful finishes and designer touches throughout. The heart of the home is the bright white kitchen, featuring shaker cabinets, a stylish backsplash, quartz countertops, warm wood shelving and a premium KitchenAid appliance package—perfect for morning coffee or evening gatherings. 9-foot ceilings and wide-plank LVP flooring create an open, elegant flow, while matching tile in the entry, bathrooms, and laundry room tie everything together with a polished feel.

This is a smart home in every sense—with LED lighting throughout, smart locks, a doorbell camera, and built-in smart wiring designed to keep you connected and secure. A central vacuum system and head-end data panel add even more function behind the scenes.

Upstairs, you'll find three spacious bedrooms, including a serene primary retreat



with room to unwind. The finished basement offers incredible flexibility, featuring sound-insulated ceilings, theatre rough-ins, and a large storage room roughed-in for a future bathroom. Whether you're envisioning movie nights, a home gym, or a creative studio, this space is ready for your vision.

The attached garage is another standout with a high-end floor coating, slat-board shelving, and even a hose bib for easy cleanups. Out back, your private deck is ready for summer evenings, with a gas line already in place for BBQ season.

In immaculate condition and decorated with timeless style, this is more than just a townhome—it's a lifestyle. Quiet, connected to nature, and finished to perfection, it offers everything you need in a location that's truly second to none.

This is your chance to live in one of Cochrane's most coveted spots—welcome home.

Built in 2015

### **Essential Information**

MLS® #	A2205855
Price	\$525,000
Bedrooms	3
Bathrooms	3.00
Full Baths	2
Half Baths	1
Square Footage	1,198
Acres	0.00
Year Built	2015
Type	Residential
Sub-Type	Row/Townhouse

Style 2 Storey  
Status Active

### Community Information

Address 1207 Jumping Pound Common  
Subdivision Jumping Pound Ridge  
City Cochrane  
County Rocky View County  
Province Alberta  
Postal Code T4C 2L1

### Amenities

Amenities Other, Visitor Parking  
Parking Spaces 2  
Parking Single Garage Attached, Additional Parking  
# of Garages 1

### Interior

Interior Features Breakfast Bar, Central Vacuum, No Animal Home, No Smoking Home, Open Floorplan, Quartz Counters, Storage  
Appliances Dishwasher, Dryer, Garage Control(s), Microwave Hood Fan, Washer, Range  
Heating Forced Air, Natural Gas  
Cooling None  
Has Basement Yes  
Basement Finished, Partial

### Exterior

Exterior Features BBQ gas line, Courtyard, Private Entrance, Private Yard, Rain Gutters, Dock  
Lot Description Back Yard, Backs on to Park/Green Space, Front Yard  
Roof Asphalt Shingle  
Construction Vinyl Siding, Wood Frame  
Foundation Poured Concrete

### Additional Information

Date Listed March 26th, 2025  
Days on Market 6  
Zoning R-MD

## Listing Details

Listing Office            RE/MAX First

Data is supplied by Pillar 9â,,ç MLSÂ® System. Pillar 9â,,ç is the owner of the copyright in its MLSÂ® System. Data is deemed reliable but is not guaranteed accurate by Pillar 9â,,ç. The trademarks MLSÂ®, Multiple Listing ServiceÂ® and the associated logos are owned by The Canadian Real Estate Association (CREA) and identify the quality of services provided by real estate professionals who are members of CREA. Used under license.